

Kit Contents

REVISIONS

REV	DESCRIPTION	DATE	APPROVED
1	INITIAL RELEASE PER ECO 16-21965	12/20/16	K.DUBROWN
A	RELEASE PER ECO 17-22875	09/26/17	K.DUBROWN

End Bracket

Front Bracket

Included In Kit:

1. FRONT BRACKET, QTY: 2
2. END BRACKET, QTY: 2
3. STANDARD HARDWARE PACKAGE INCLUDES ALL THE HARDWARE NECESSARY TO MOUNT THE BRACKETS:
#8-32 x 1/2" MACHINE SCREWS (48) AND #10-32 x 3/8" MACHINE SCREWS (24).

8-32 Machine Screws

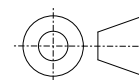
10-32 Machine Screws

TOLERANCES:

Unless otherwise specified:
All dimensions in inches

.X +/- .025
.XX +/- .010
.XXX +/- .005
Angles +/- 1°

THIRD ANGLE PROJECTION



THIS DRAWING IS THE PROPERTY OF SYNQOR INC.
It is not to be reproduced or copied, in whole or in part, or used for furnishing information to others, or for any purpose detrimental to the interests of SynQor. The information shown herein may be protected by patents owned or controlled by SynQor.

SynQor

155 Swanson Road
Boxborough, MA 01719

UPS SHORT RACK HARD MOUNT BRACKET SET

SOURCE: PRO/E UPS_SR_HARD_MOUNT_KIT_CONTENTS

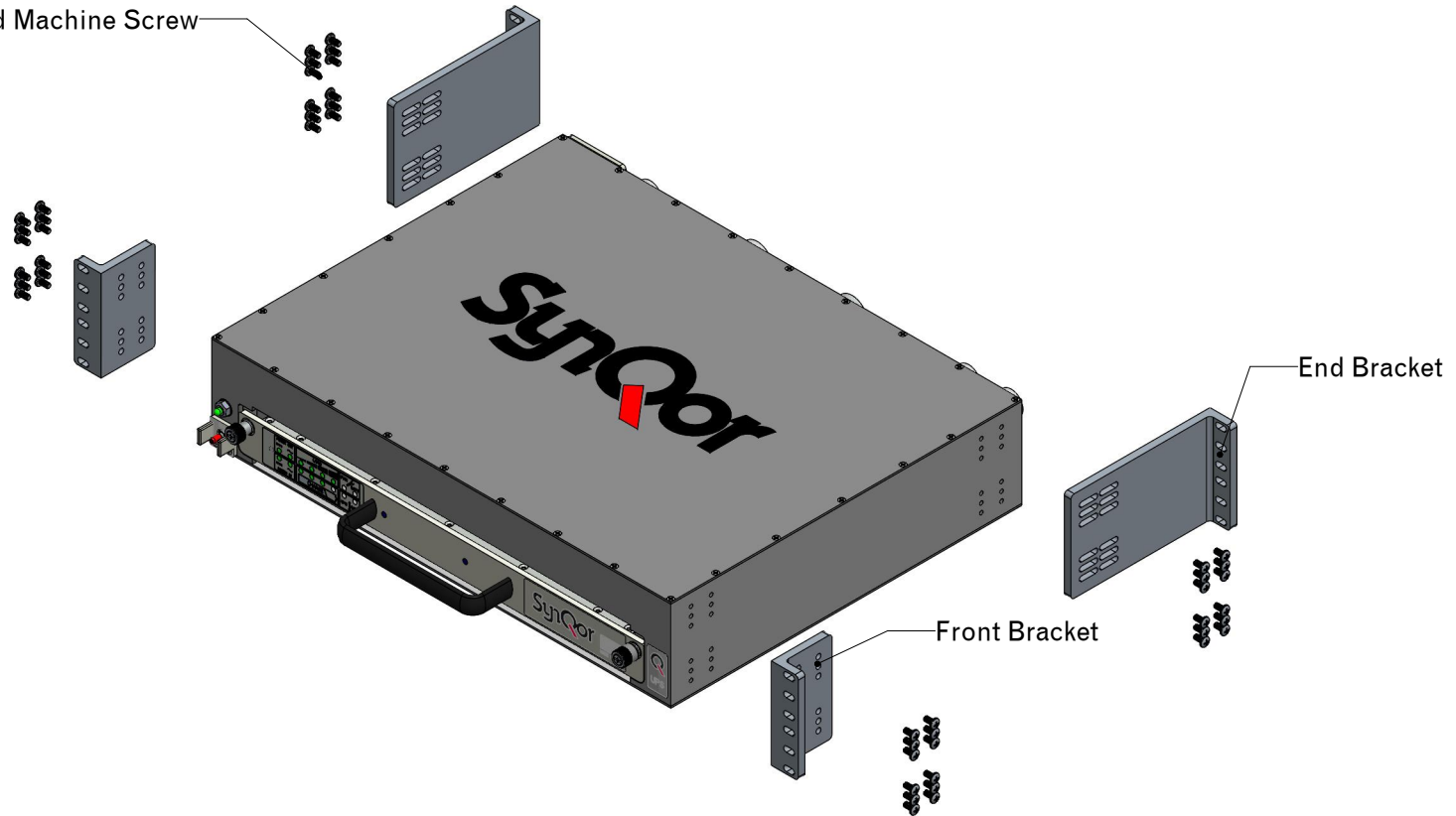
SIZE	DATE	DWG. NO.	REV
A	SEP-26-17	SYN-9041	A

SCALE: 0.400 DRAWN: CHECK: SHEET 1 of 4

REFERENCE SYNQOR SPECIFICATION: 554-1000012

Bracket - Chassis Mount Diagram

8-32 Pan Head Machine Screw



TOLERANCES:

Unless otherwise specified:
All dimensions in inches

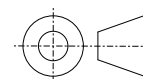
.X +/- .025

.XX +/- .010

.XXX +/- .005

Angles +/- 1°

THIRD ANGLE PROJECTION



THIS DRAWING IS THE PROPERTY OF SYNQOR INC.
It is not to be reproduced or copied, in whole
or in part, or used for furnishing information
to others, or for any purpose detrimental to the
interests of SynQor. The information shown herein
may be protected by patents owned or controlled by SynQor.

155 Swanson Road
Boxborough, MA 01719

UPS SHORT RACK HARD MOUNT BRACKET SET

SOURCE: PRO/E UPS_SR_HARD_MOUNT_KIT_CONTENTS

SIZE	DATE	DWG. NO.	REV
A	SEP-26-17	SYN-9041	A

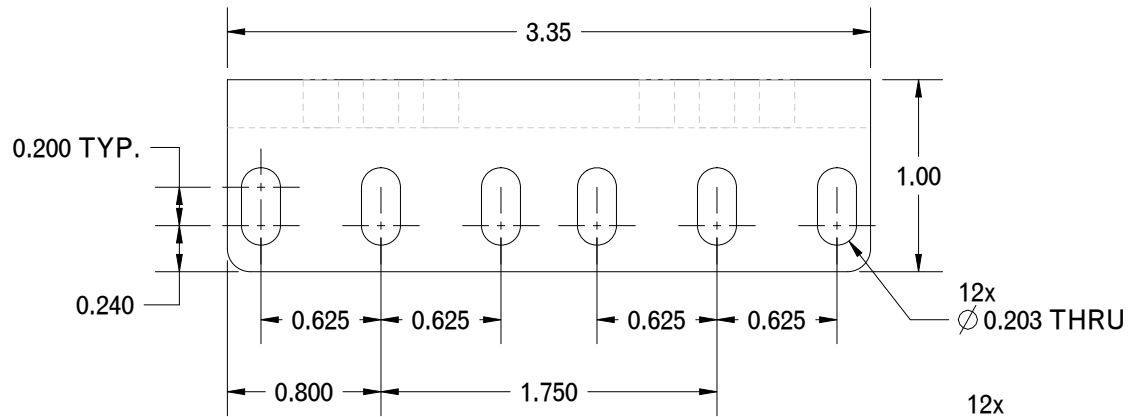
SCALE: 0.200 DRAWN: CHECK: SHEET 2 of 4

Front Bracket Details

NOTES:
 1. MATERIAL: 6061-T6 ALUMINUM
 2. FINISH: CLEAR ANODIZED

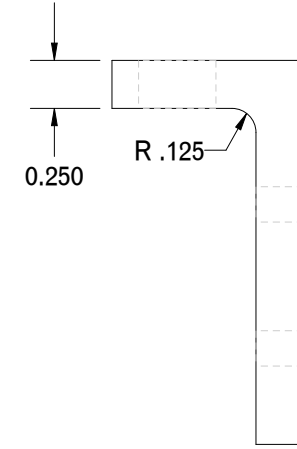
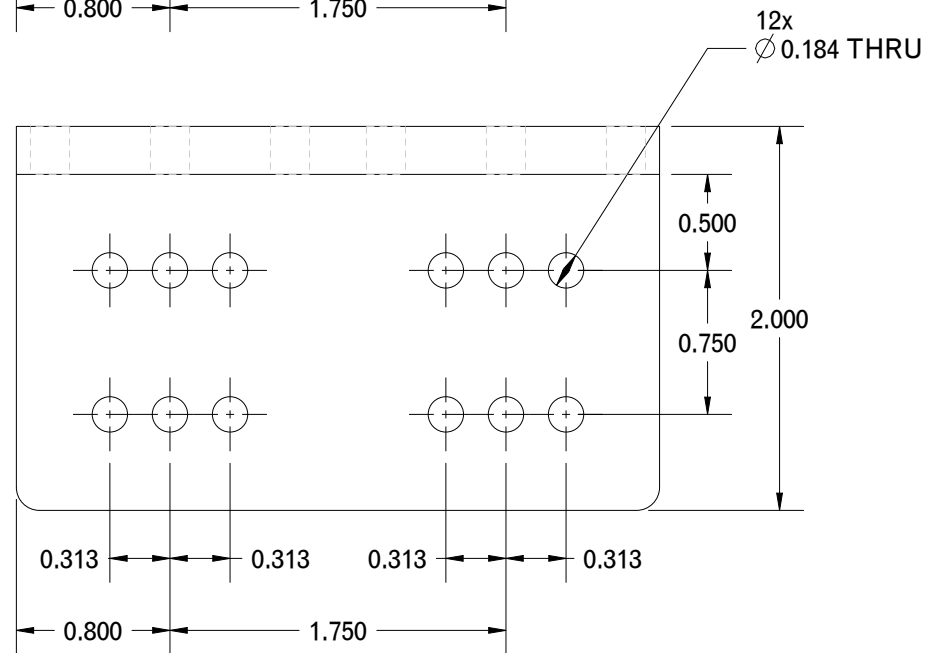
A

A



B

B



C

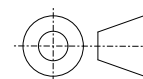
C

TOLERANCES:

Unless otherwise specified:
 All dimensions in inches

- .X +/- .025
- .XX +/- .010
- .XXX +/- .005
- Angles +/- 1°

THIRD ANGLE PROJECTION



THIS DRAWING IS THE PROPERTY OF SYNQOR INC.
 It is not to be reproduced or copied, in whole or in part, or used for furnishing information to others, or for any purpose detrimental to the interests of SynQor. The information shown herein may be protected by patents owned or controlled by SynQor.



155 Swanson Road
 Boxborough, MA 01719

UPS SHORT RACK HARD MOUNT BRACKET SET

SOURCE: PRO/E UPS_S-R_FRONT_BRACKET

SIZE	DATE	DWG. NO.	REV
A	SEP-26-17	SYN-9041	A

SCALE: 1.000 DRAWN: CHECK: SHEET 3 of 4

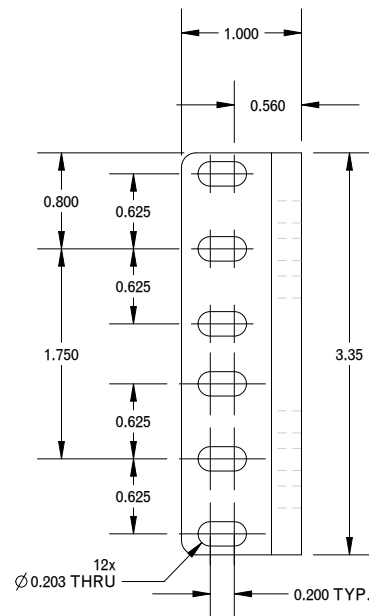
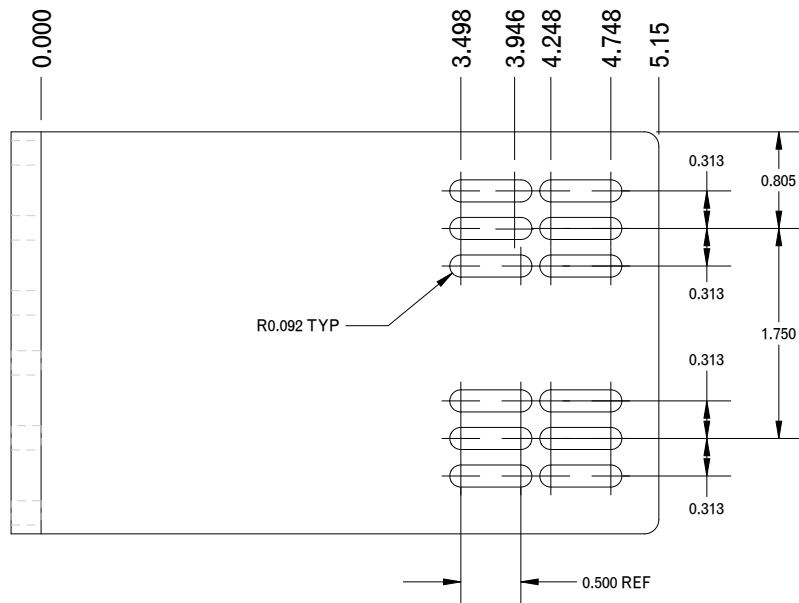
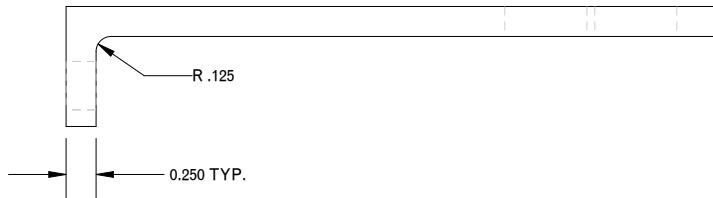
1

2

3

4

End Bracket Details

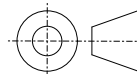


TOLERANCES:

Unless otherwise specified:
All dimensions in inches

- .X +/- .025
- .XX +/- .010
- .XXX +/- .005
- Angles +/- 1°

THIRD ANGLE PROJECTION



THIS DRAWING IS THE PROPERTY OF SYNQOR INC.
It is not to be reproduced or copied, in whole
or in part, or used for furnishing information
to others, or for any purpose detrimental to the
interests of SynQor. The information shown herein
may be protected by patents owned or controlled by SynQor.

SynQor

155 Swanson Road
Boxborough, MA 01719

UPS SHORT RACK HARD MOUNT BRACKET SET

SOURCE: PRO/E UPS_S-R_REAR_BRACKET

SIZE	DATE	DWG. NO.	REV
A	SEP-26-17	SYN-9041	A

SCALE: 0.625 DRAWN: CHECK: SHEET 4 of 4